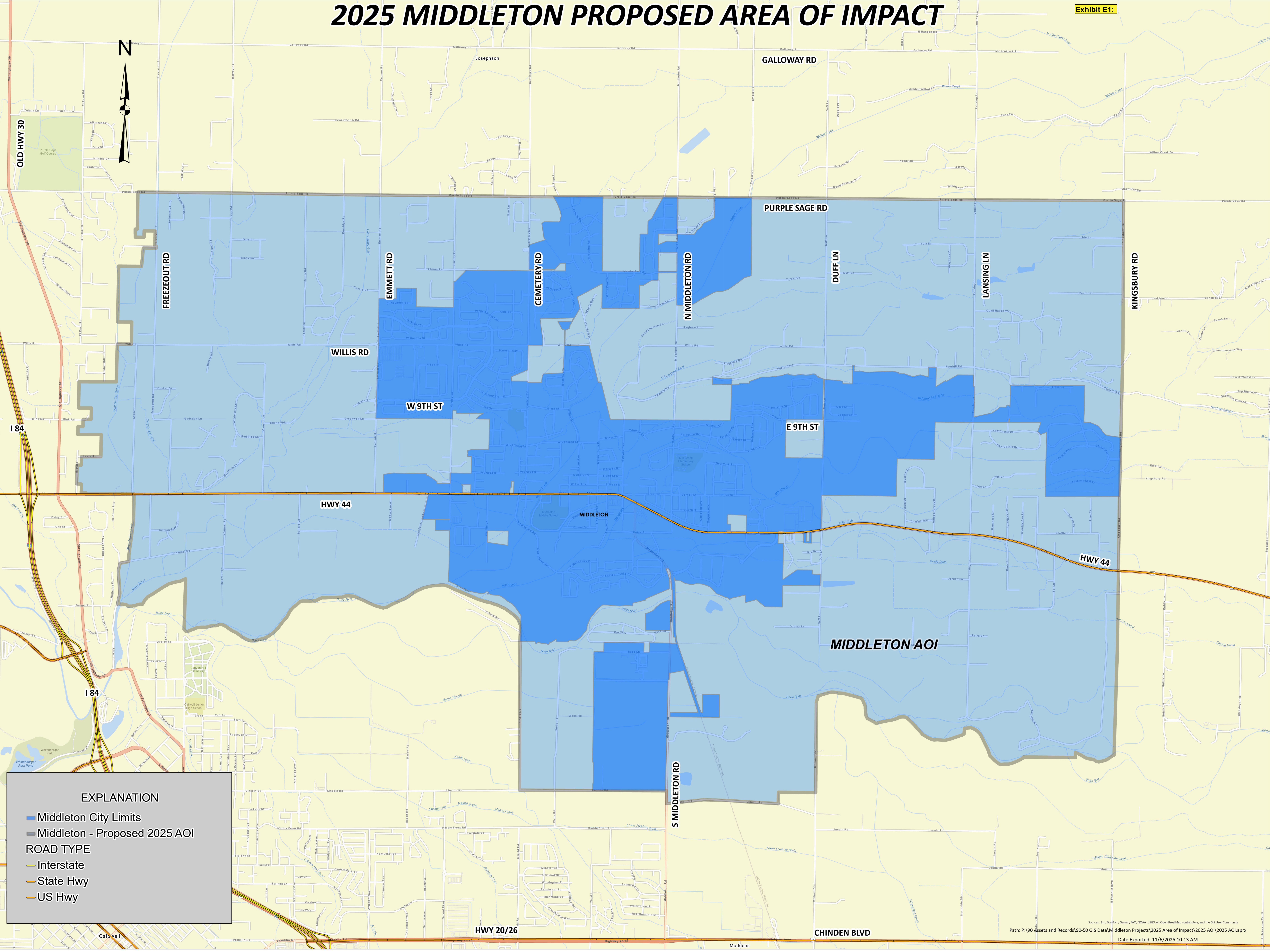


2025 MIDDLETON PROPOSED AREA OF IMPACT

Exhibit E1:



OLD HWY 30

184

184

FREEZEOUT RD

WILLIS RD

W 9TH ST

EMMETT RD

CEMETERY RD

N MIDDLETON RD

PURPLE SAGE RD

DUFF LN

LANSING LN

KINGSBURY RD

HWY 44

MIDDLETON

E 9TH ST

HWY 44

MIDDLETON AOI

S MIDDLETON RD

HWY 20/26

CHINDEN BLVD

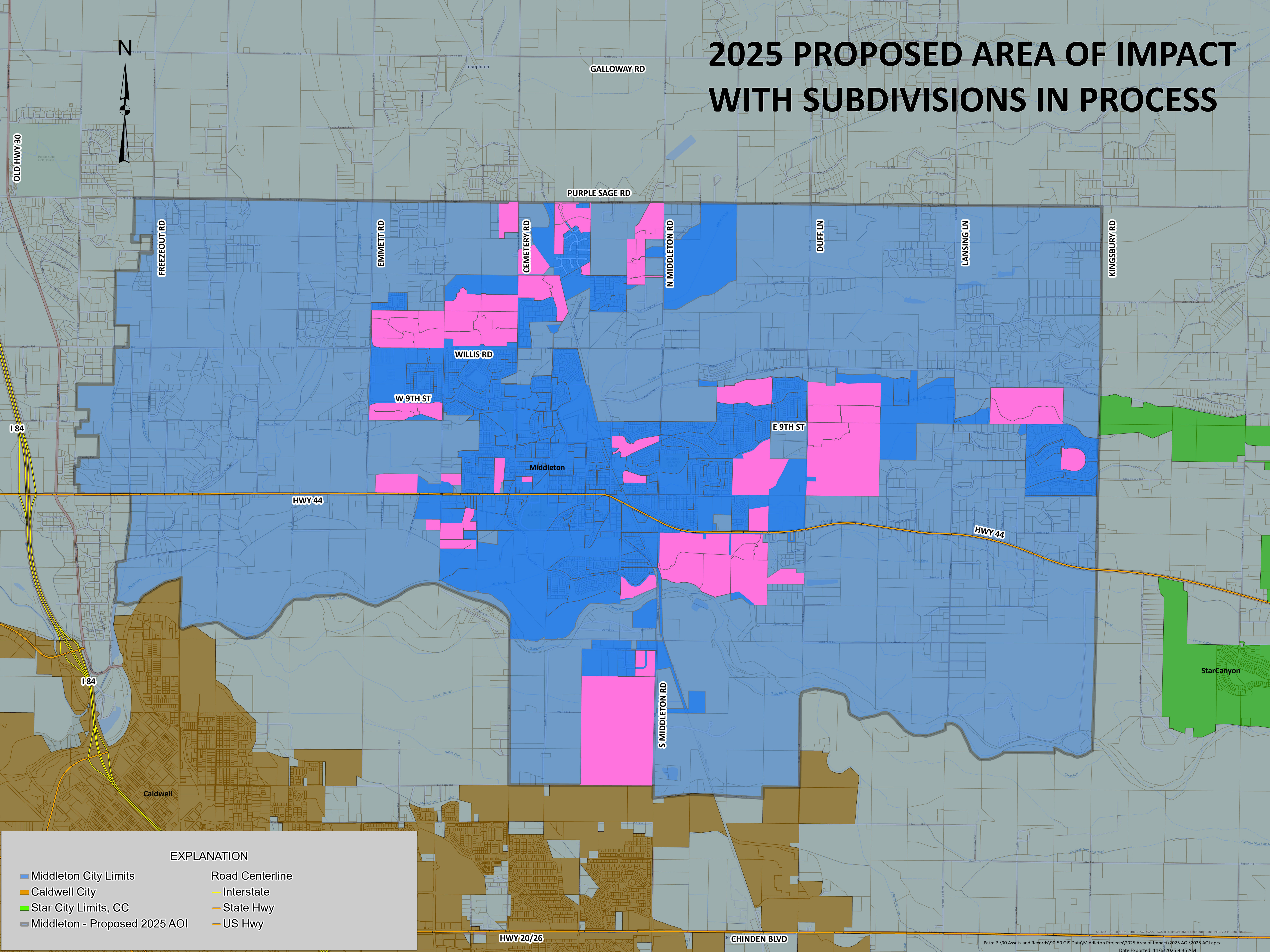
EXPLANATION

- Middleton City Limits
- Middleton - Proposed 2025 AOI

ROAD TYPE

- Interstate
- State Hwy
- US Hwy

2025 PROPOSED AREA OF IMPACT WITH SUBDIVISIONS IN PROCESS



EXPLANATION

- Middleton City Limits
- Caldwell City
- Star City Limits, CC
- Middleton - Proposed 2025 AOI
- Road Centerline
- Interstate
- State Hwy
- US Hwy

HWY 20/26

CHINDEN BLVD



Middleton Waste Water Treatment Plant Expansion Program Summary

Key Figures

Currently Serves	≈4,814 Current Connections	≈14,300 people
Connections in Current Service Area	≈8,000 Potential Connections	
Current WWTP Capacity	8,064 Connections	≈23,950 people
2026 WWTP Re-Build Capacity	9,867 Total Connections	≈29,305 people
1 st Expansion Capacity	12,267 Total Connections	≈36,433 people
2 nd Expansion Capacity	13,467 Total Connections	≈40,000 people
Future Expansions Capacity	???	

≈\$78M

≈\$21M (Growth Funded)

≈\$12M (Growth Funded)

(Growth Funded)

Notes: Figures in 2024 dollars based on Ardurra's, Civil Dynamic's, and City Staff's opinion of probable costs. Re-build project based on 5/30/19 Wastewater Master Plan, 6/21/23 Preliminary Engineering Report, and 8/26/24 Preliminary Engineering Report Addendum.