

# Canyon County

Historic Preservation Commission



**FY2027 Grant Recommendations  
to the Board of County Commissioners**



# In Review

## **BACKGROUND**

Idaho Code 31-864 grants the Board of County Commissioners the authority to levy not more than twelve one-thousandths percent (.012%, or about 1 cent) on each dollar of market value for assessment purposes of taxable property within the County for the support of historical societies, museums, and historic preservation projects. These funds are dedicated to a grant award program. Canyon County is the ONLY county in Idaho to do this.

## **CANYON COUNTY HISTORIC PRESERVATION COMMISSION MEMBERS**

Dr. Cody Carlson, Assistant Professor of History, College of Western Idaho

George DeFord, Jr., Owner and attorney at DeFord Law

Nikki Gorrell, Associate Professor of Anthropology, College of Western Idaho

Mari Harris, Assistant Professor of History, College of Western Idaho

Dr. Rachel Miller, Klara K. Hansberger Assistant Professor of History, College of Idaho

Bruce Poe, Principal Architect, Modus Architecture

Zach Wesley, Civil, Prosecuting Attorney, Canyon County

Chelsee Boehm, Historic Preservation Officer, Canyon County

## **CERTIFIED LOCAL GOVERNMENT (CLG)**

Canyon County is a CLG - a program provided through an amendment to the National Historic Preservation Act of 1966. The CLG designation gives local governments a specific, formal role in historic preservation. As a CLG, Canyon County maintains a relationship with the Idaho State Historic Preservation Office (SHPO) and is eligible to apply for grants from SHPO - federal dollars that they receive from the National Park Service.

## **CANYON COUNTY HISTORIC PRESERVATION GRANT AWARD PROGRAM**

Under the direction of the Board of County Commissioners, the Canyon County HPC reviews, recommends, and administers the Canyon County Historic Preservation Grant Award Program. This program gives funds to qualified, nonprofit organizations in Canyon County who have a mission of conservation, protection, and maintenance of historic information, materials, or properties.

In general, the Historic Preservation tax levy funds can go to:

- (1) Support of historical societies which operate primarily within the county; or
- (2) Support of museums operated within the county; or
- (3) Support of historical restoration projects undertaken within the county; or
- (4) Marking and development of historic sites within the county.

# Grant Application Evaluation

**Applications are reviewed to ensure that each meets the qualifications of the historic preservation levy.** Applications require proof of 501(c)(3) or nonprofit status. When a project involves physical improvements to a building, structure, or facility, they must also provide proof of ownership. This helps guarantee that awards are not given to projects under bank loans that could default. Each project is encouraged to provide financial estimates/bids, letters of commitment for maintenance and long-term sustainability of the project, letters of commitment for grant matches, letters of support, drawings/plans, and photos. The review process provides the HPC a chance to ask questions about the proposal, allow for clarifications, or request additional information before the final recommendation.

HPC Members evaluate applications based on answers to the following questions:

- 1. How does this project address a historic preservation issue in Canyon County?**
- 2. Describe the urgency of this project due to potential resource damage or other impacts that may cause an opportunity to be lost.**
3. Describe the project. Include drawings, plans, photos, schedules, proof of ownership of the project property, and compliance with applicable laws. (Americans with Disabilities Act, National Environmental Policy Act, Uniform Building Code, etc.)
4. How did you plan this project? (Did you use consultants? Who are the consultants and their qualifications? Did you get financial bids/quotes? Do you have applicable training pertaining to this project?)
- 5. Why is the project needed and how does it benefit the citizens of Canyon County?**
- 6. If this application is part of a multi-year, phased project, please include information about the use of past award funds and include a complete and detailed plan of future phases and financial needs through to project completion with an anticipated timeline of these phases.**
7. Will a fee be charged to the public to use your project when completed? If yes, explain.
8. How will the resulting project be available to the citizens of Canyon County?  
(What is the availability plan? How often will it be available? How will people be made aware that it is available?)
9. If your project is located within a museum or restricted facility, please answer the following:
  - Regular Hours of Operation
  - Total Hours Per Year the Facility is Available to the Public
  - Number of Visitors Per Year
  - How is availability publicized?
10. If this application is one of multiple applications, please indicate the priority of the application: 1st, 2nd, 3rd, 4th

# Economic Benefits of Historic Preservation

## WHY SHOULD CANYON COUNTY INVEST IN HISTORIC PRESERVATION?

There are many benefits to Canyon County investing in historic preservation projects.

### Heritage Tourism

Sites unique to Canyon County attract visitors, and these visitors spend money at local businesses.

#### For example:

- The Snake River Canyon Scenic Byway attracts visitors who stop at wineries, restaurants, and other businesses in the community.
- ArchWalks, organized by Preservation Idaho, at the Luby Park Rose Garden has brought people to Caldwell for tours.

### Historic Buildings Attract Small Businesses

These often small scale buildings attract new businesses, offer affordable opportunities for non-profits, may provide diverse housing options, and help create community spaces.

#### For example:

- Many of the buildings at Indian Creek, which has been very successful, are in the Caldwell Historic District (listed on the National Register of Historic Places) and the same applies for Nampa's Downtown Historic (listed on the National Register).
- Grant recipients like the American Legion, the Caldwell Veterans Memorial Hall, and the Nampa Valley Grange are philanthropic, non-profit organizations with small budgets, that need affordable spaces to work.

### Keeps Money in the Local Economy

Grant recipients typically hire local contractors and experts to complete the work for their projects.

#### For example:

- For the FY2025 roof project at the Nampa Valley Grange, a company in Canyon County completed the work and was paid by grant funds. (\$37,000)
- For part of the FY2024 room restoration project at the Melba Valley Museum, a company in Canyon County completed the work and was paid by grant funds (\$7,960)
- For the FY2023 mortar project at the Nampa Train depot, a Canyon County company completed the work (\$32,709)
- and so many more!

### Grant Matching

The Canyon County Historic Preservation Commission can use distributed grant funds as in-kind match for other grant opportunities. Since 2018, our HPC has received \$62,810 in grants to to complete history projects for Canyon County.

# Canyon County

## Historic Preservation Commission

### FY2027 Applications

The Canyon County Historic Preservation Commission (HPC) received and reviewed **11 applications from 6 different organizations** requesting fiscal assistance for a total of **\$201,477**. This year, the HPC received **one** application from an **applicant who has never applied with us before!**

Last year, the HPC received 16 applications from 11 organizations for \$173,463; the BOCC awarded \$74,250.

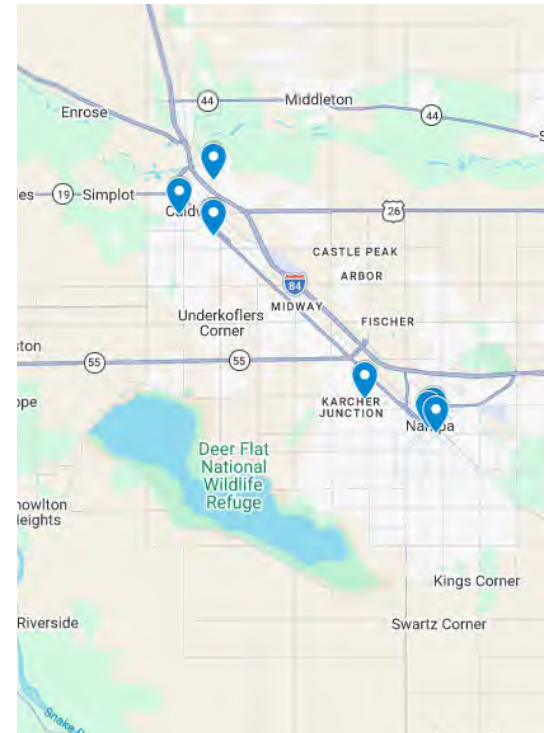
### Applicant Distribution

#### Caldwell

Caldwell Historical Society  
College of Idaho

#### Nampa

American Legion, Post 18  
Canyon County Historical Society  
Evergreen Heights Mennonite Church  
Nampa Public Library Foundation



We acknowledge that each of these proposed projects are important. However, we understand that it may not be possible to fund all requests. The HPC has ranked each application according to the priority levels **urgent**, **high**, **medium** and **low**. These priority rankings are designated on each page. We hope they will assist to inform decision making.

**All recommended applications follow in alphabetical order.**

# American Legion, Post 18 (1 of 2)

## Chateau Fascia and Gutter Repair (#1 Priority for Organization)

One application requesting funds to replace most (64 linear feet) of the fascia boards along the roofline, and extension of gutters and downspouts (10) to move rainwater and snowmelt away from the foundation and split-level windows.

**Total Requested: \$4,765    Amount Recommended: \$4,765**

- Constructed in 1931, this building is on the National Register of Historic Places. It represents the work of prominent architectural firm, Tourtellotte and Hummel (who also designed the Idaho State Capitol, the Egyptian Theater, and several churches in Canyon County).
- Repair and restoration of the building has been ongoing for several years with support from the Historic Preservation Grant program.
- \* Fascia board is rotting or decayed. Some parts of the building do not currently have gutters, but need them to prevent further damage to the building's stucco exterior.



The HPC and the State Historic Preservation Office (SHPO) agree that this project be prioritized over the exterior painting.



The HPC determined this project is high priority due to the likelihood of potential damage that could occur to the building's exterior and foundation if this issue is not fixed.

**HPC Priority: High**

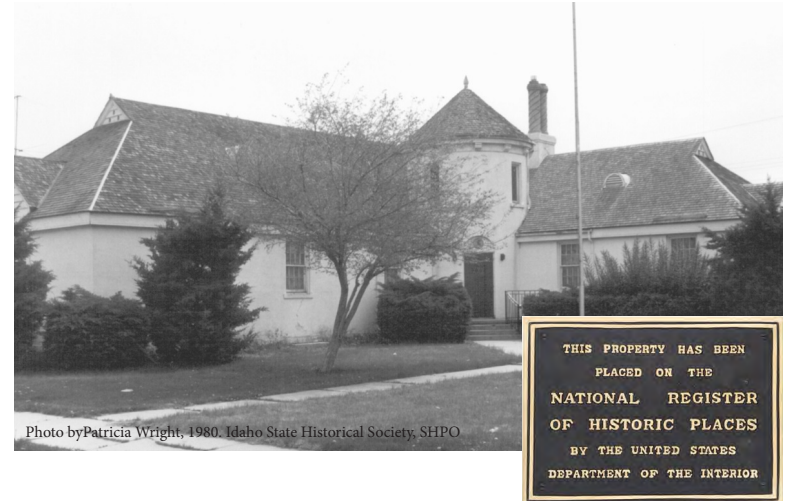
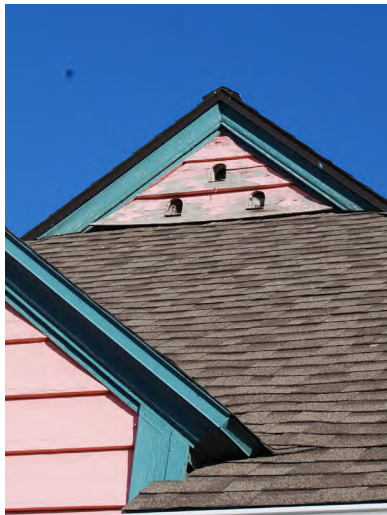
# American Legion, Post 18 (2 of 2)

## Chateau Exterior Paint (#2 Priority for Organization)

One application requesting funds to repaint the exterior of the building to something more similar to its original color scheme. Over the decades, the paint has flaked, chipped, and faded.

**Total Requested: \$21,305**

- \* Exterior paint has chipped, flaked and stained.
- \* Doors and railings require paint for safety (grip and splinters) and to help maintain internal climate control.



The State Historic Preservation Office (SHPO) has concerns about the building's exterior stucco, and wants to ensure that any selected contractor blends work appropriately. SHPO also encourages that any decisions on paint color be informed by historical sources.

The HPC determined this project is medium as the building's exterior is important, but this is more of a cosmetic issue than a potential structural one.

**HPC Priority: Medium**

# Caldwell Historical Society (1 of 2)

## Luby Park Pumphouse Restoration (#1 Priority for Organization)

One application requesting funds to begin restoration of the 100-year-old pumphouse at Luby Park, beginning with replacing the roof.

**Total Requested: \$50,000    Amount Recommended: \$30,000**

- Built around 1910, the structure formerly housed a 750 horsepower engine for pumping water. Today it is a maintenance shed. The City hopes to restore the building, and turn it into a space for public use.
- Luby Park Rose Garden & Pumphouse are in the process of being listed on the National Register of Historic Places. Caldwell Historical Society received an HPC grant in FY2024 to pay for this nomination.
- \* Currently, the roof is in poor shape, and is not protecting the rest of the building from weather.



The State Historic Preservation Office (SHPO) is happy to see this application, and is extremely supportive of this project. The Caldwell Historical Society is willing to accept partial funding.

The HPC determined this project is urgent, as immediate action is required. The damaged roof has allowed, and will continue to let water in, potentially causing significant damage to the rest of the building.

**HPC Priority: Urgent**

# Caldwell Historical Society (2 of 2)

## Van Slyke Museum ADA Concrete Path (#2 Priority for Organization)

One application requesting funds to install approximately 2,185 square feet of concrete pathways within the Van Slyke Museum.

**Total Requested: \$42,234**

- The Van Slyke Museum, inside Caldwell's Memorial Park, is home to two 1860s cabins, agricultural equipment, and train cars.
- In the past, the Historic Preservation Grant program has provided funds to the Van Slyke Museum for the restoration/preservation of artifacts at the site, interpretive signage, and a roof canopy.
- \* Installation of sidewalk will help to make the museum more accessible to those who use wheelchairs or have other limited physical abilities.

The HPC has concerns about the accessibility of this project. For several years, the Van Slyke Museum has had limited hours, and has not been broadly available to visitors. The City of Caldwell is instituting a reservation system to try to make the space more accessible.



Photo by Idaho Press

The HPC determined this project is low priority, due to the site's limited open hours.

**HPC Priority: Low**

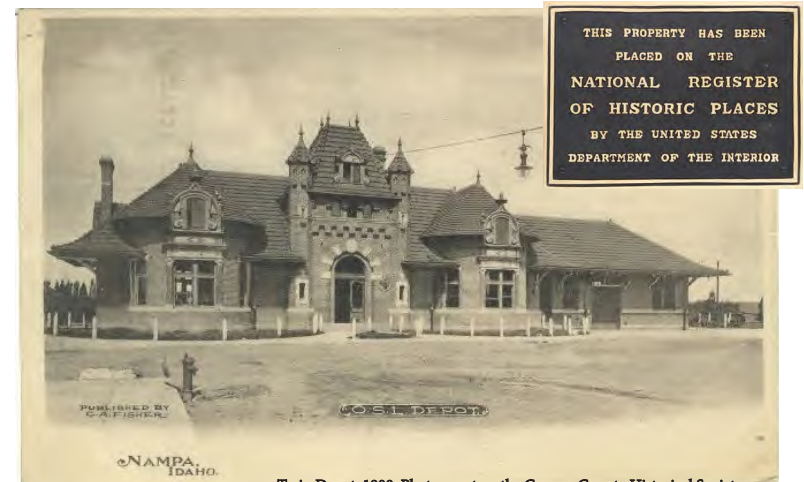
# Canyon County Historical Society (1 of 3)

## Nampa Train Depot Restroom Restoration (#1 Priority for Organization)

One application requesting funds to hire a professional contractor to restore both restrooms from their current 1960s decor to match the building's 1903 opening date.

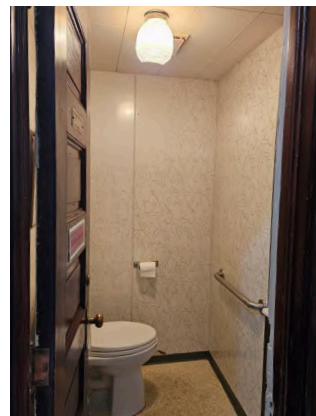
**Total Requested: \$17,900**

- The Nampa Train Depot, first used in 1903, is listed on the National Register for its significance in transportation as part of the Oregon Short Line. Its architectural style is described as, "an interesting eclectic combination of Romanesque Renaissance and Baroque elements."
- Now over 120 years old, the building is owned by the Union Pacific and leased to the Canyon County Historical Society - who operates it as a museum. They see an estimated 3,300 visitors per year.
- \* The bathrooms were significantly altered in the 1960s. More recently, portions of the walls and ceilings were removed and need to be replaced.
- \* There are no plans to make the bathrooms ADA accessible, and the City of Nampa has determined it is not necessary.



Train Depot, 1908. Photo courtesy the Canyon County Historical Society

The State Historic Preservation Office (SHPO) does not support this application, as there is no evidence for what the bathrooms used to look like, and thus proposed plans may lack accuracy. They suggest further research, or referring to other examples for more inspiration.



The HPC determined this project is low priority, as the site still has working bathrooms, and due to concerns about the accuracy of any updates.

**HPC Priority: Low**

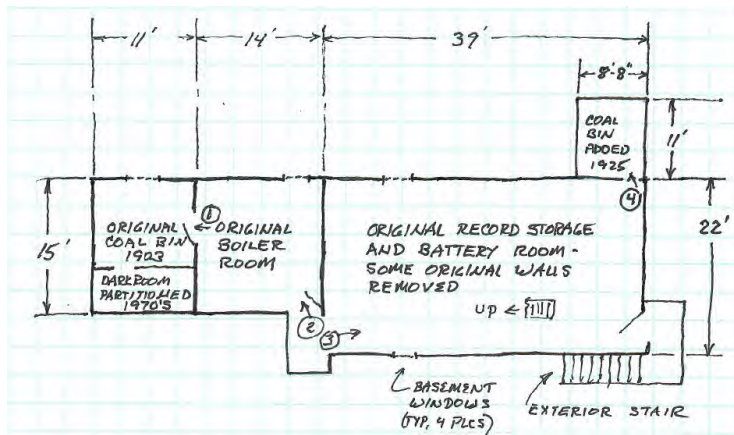
# Canyon County Historical Society (2 of 3)

## Nampa Train Depot Museum Dehumidifier (#2 Priority for Organization)

One application requesting funds to purchase a dehumidifier and two temperature-humidity monitors to be used in the basement of the Nampa Train Depot, where the collections are stored, to control and monitor humidity.

**Total Requested: \$2,322    Amount Recommended: \$2,322**

- \* Leaks in the Depot's basement raise significant concerns for the safety of the museum's collections.
- \* Museum volunteers found water damage and mold in some collections that were not previously cared for.
- \* Dehumidifier will help to prevent mold grow or other potential damage to artifacts, until leaks can be located and repaired.



The State Historic Preservation Office (SHPO) suggests that in the next fiscal year, the Canyon County Historical Society works to address the roots of this issue, instead of looking for reactive solutions.

The HPC determined this project is high priority due to the potential of historic artifacts being damaged or completely destroyed.

**HPC Priority: High**

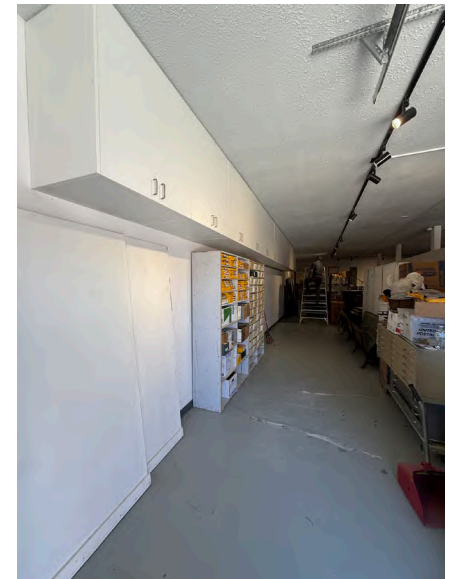
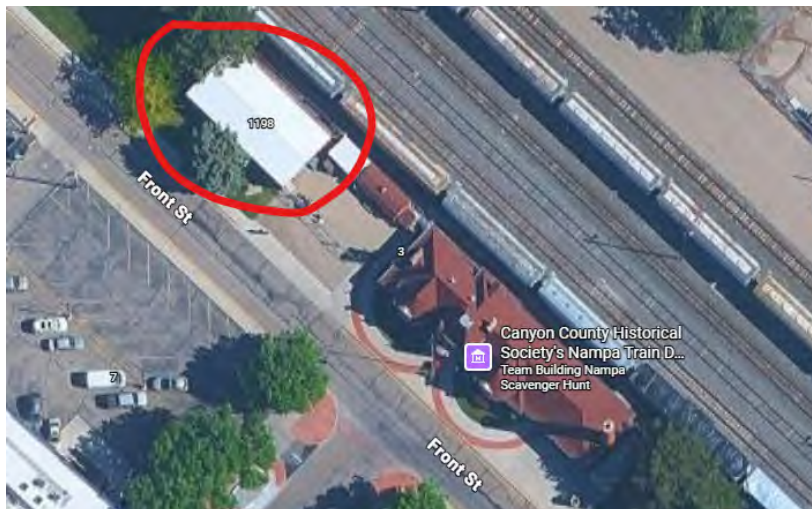
# Canyon County Historical Society (3 of 3)

## Red Building Project - Audio and QR Code Tour Guide Aspect (#3 Priority for Organization)

One application requesting funds to pay for a service that will help to support historic preservation and expand educational impact through incorporating STEM-based learning into each exhibit room of the red building extension using audio scripts and QR-enabled artifact interpretation.

**Total Requested: \$12,780**

- \* The red building, adjacent to the Nampa Train Depot, has long been used for storage. Recently, the Historical Society installed shelves along the wall, at the ceiling to make space for displays.
- \* The CCHS plans to install moveable walls at the center of the building, and create small vignettes to display artifacts according to themes.



The HPC determined this project is low priority, as there are no active threats to collections or buildings.

**HPC Priority: Low**

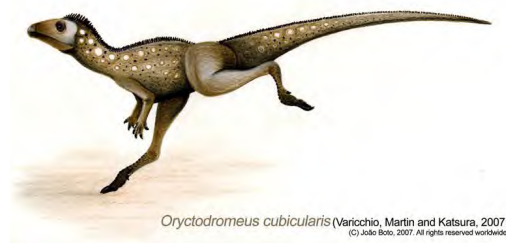
# College of Idaho Inc. (non-profit), Orma J. Smith Museum of Natural History

## State of Idaho Dinosaur Exhibit (#1 Priority for Organization)

One application requesting funds to improve fossil storage, pay for new cabinets and an improved exhibit space with new and rehabilitated cases.

**Total Requested: \$5,000    Amount Recommended: \$5,000**

- The Orma J. Smith Museum of Natural History, on the College of Idaho campus, has one of the largest collections of fossil plants west of the Mississippi.
- The fossil materials "represent the history of Idaho, as well as the history of research and collection of fossils in the state."
- \* The exhibit will allow the display of artifacts that are not currently stored according to best practices and are susceptible to damage.
- \* The exhibit will highlight the state dinosaur, *Oryctodromeus cubicularis*, and explore the Late Cretaceous and Lake Idaho ecosystems and their significance to the local area.



The HPC determined this project is high priority, due to the ongoing, and potential damage that may occur to artifacts that are improperly stored.

**HPC Priority: High**

# College of Idaho Inc. (non-profit), Whittenberger Planetarium

## LED Moon Projector Conversion (#2 Priority for Organization)

One application requesting funds to upgrade the sun projector on the Spitz A3P projector at the Whittenberger Planetarium at the College of Idaho to an LED light source.

**Total Requested: \$400    Amount Recommended: \$400**

- The Whittenberger Planetarium, in the Boone Hall at the College of Idaho, provides public outreach and educational programs to the community.
- The planetarium has origins in the space race, and helped to draw national attention to the Caldwell community.
- The 56-year old Spitz A3P projector allows for visual storytelling and serves as "an invaluable tool for modeling celestial movements in a way that cannot be equally demonstrated by any other means."
- \* While old, the projector is in great condition, with an annual service contract. The lifespan of the LED light source is tens of thousands of hours, compared to the lifespan of those bulbs being replaced.



The HPC determined this project is medium priority, as it assists the preservation of a historic artifact and space, but the artifact is not currently in dire conditions.

**HPC Priority: Medium**

# Nampa Public Library Foundation

## Showcasing Canyon County: Curated Displays for Educating & Inspiring the Public

One application requesting funds to install quality display cabinets to both create and host rotating historical exhibits in partnership with local groups, securely transforming library spaces into educational hubs that preserve Nampa and Canyon County's heritage, and inspire a deeper connection to the past.

**Total Requested: \$31,881    Amount Recommended: \$31,881**

- Several community partners have asked the Library for space to showcase artifacts for the public, but the Library currently only has one cabinet with broken, unrepairable lights.
- The Nampa Public Library serves thousands of visitors every year, and many are interested in history.
- \* Grant will pay for three display cases and shipping.
- \* Each case will be on a different floor of the library, to increase visibility.
- \* Project will provide exhibit space for community partners doing history work, like the Daughters of the American Revolution (DAR) and the Western Heritage Foundation.



The Nampa Public Library Foundation is willing to accept partial funding.



The HPC determined this project is medium priority, as it increases access to a wide variety of collections, in a space that is used by many people and organizations.

**HPC Priority: Medium**

# Evergreen Heights Mennonite Church

## Antioch Cemetery Restoration Project

One application requesting funds to restore the Antioch Mennonite Cemetery, established in 1900, to preserve this part of Nampa's history.

- The Antioch Cemetery, established in 1900, was part of the Antioch Church. There are at least thirteen people, including several children, buried in the cemetery.
- The College of Western Idaho and Boise State University are conducting radar scans for underground irregularities, likely graves. This shows that the boundaries of the cemetery parcel likely need to be expanded.
- \* Grant would pay to upgrade fencing, install headstones, cameras, and plants, and produce roadside signage.



The HPC recognizes this is an important project. However, they have concerns about funds going toward project on private property. There is no evidence of public easements.

In its current form, the HPC does **NOT** recommend this project is funded.

# Funding Recommendations

In FY2025, the BOCC approved funding for \$76,700 worth of projects.

In FY2026, the BOCC awarded \$74,250 in grants.

For FY2027, the HPC recommends that the BOCC fund \$74,368 in project applications.

| Organization  | Project<br>(Organized by Overall Rank)                | Amount Requested<br>FY2027 | Priority                         | Amount Recommended<br>FY2027         | Cumulative Total |
|---|---|----------------------------|----------------------------------|--------------------------------------|------------------|
| Caldwell Historical Society   | Luby Park Pumphouse Restoration Project*              | \$50,000                   | URGENT                           | \$30,000<br><i>(partial funding)</i> |                  |
| American Legion, Post 18  | Chateau Fascia and Gutter Repair*                     | \$4,765                    | HIGH                             | \$4,765                              | \$34,765         |
| Canyon County Historical Society  | Nampa Depot Museum Dehumidifier*                      | \$2,322                    | HIGH                             | \$2,322                              | \$37,087         |
| College of Idaho,<br>Orma J. Smith Museum of Natural History              | State of Idaho Dinosaur Exhibit                       | \$5,000                    | HIGH                             | \$5,000                              | \$42,087         |
| American Legion, Post 18  | Chateau Exterior Paint*                               | \$21,305                   | MEDIUM                           | -                                    | \$42,087         |
| College of Idaho,<br>Whittenberger Planetarium                            | LED Moon Projector Conversion                         | \$400                      | MEDIUM                           | \$400                                | \$42,487         |
| Nampa Public Library Foundation   | Curated Displays for Educating & Inspiring the Public | \$31,881                   | MEDIUM                           | \$31,881                             | \$74,368         |
| Canyon County Historical Society  | Depot Bathrooms*                                      | \$17,900                   | MEDIUM                           | -                                    |                  |
| Canyon County Historical Society  | Red Building Project – Audio and QR Code Tour         | \$12,780                   | LOW                              | -                                    |                  |
| Caldwell Historical Society   | Van Slyke ADA Concrete Path                           | \$42,324                   | LOW                              | -                                    |                  |
| Evergreen Heights Mennonite Church  | Antioch Cemetery Restoration Project                  | \$12,650                   | Does not meet<br>levy parameters | 0                                    |                  |
| <b>*represents buildings on the National Register of Historic Places*</b> |   | TOTAL                      |                                  |                                      | \$74,368         |
|   |   | INCREASE FROM FY2026       |                                  |                                      | \$118            |